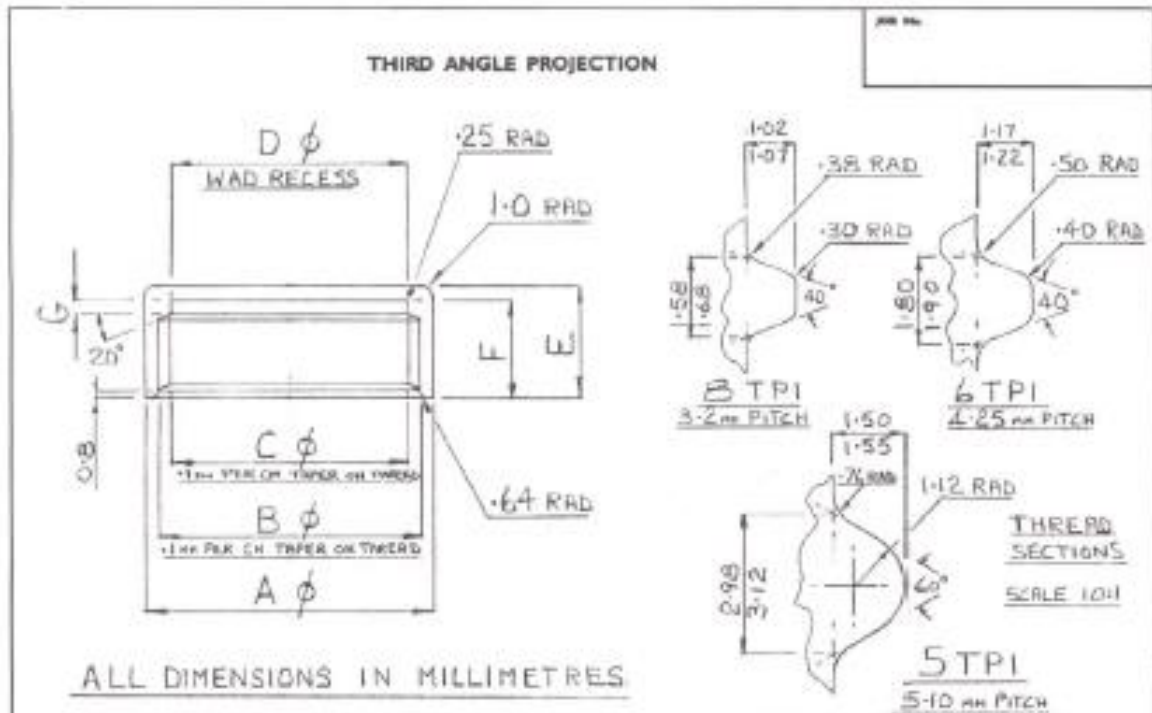


G Baldwin & Co

PURVEYORS OF NATURAL PRODUCTS SINCE 1844

Wide Mouth Amber Jar Closure Technical Diagram



CPN°	SIZE	A ϕ	B ϕ	C ϕ	D ϕ	E	F	G	THREAD T P I
001	18 _{HH}	20.85	18.31	16.19	16.10	10.64	9.22	1.3	8
002	20 _{HH}	22.83	20.29	18.17	18.08	10.64	9.22	1.3	8
003	22 _{HH}	24.87	22.33	20.21	20.02	10.64	9.22	1.3	8
004	24 _{HH}	26.85	24.31	22.19	22.06	11.38	9.96	1.3	8
005	28 _{HH}	30.61	28.07	25.64	25.55	11.38	9.96	1.3	6
006	30 _{HH}	31.42	29.08	26.65	26.57	11.46	10.03	1.3	6
007	33 _{HH}	35.13	32.59	30.16	30.07	11.58	10.03	1.3	6
008	38 _{HH}	40.41	37.87	35.44	35.36	11.58	10.03	1.3	6
009	40 _{HH}	43.05	40.51	38.08	38.00	11.58	10.03	1.3	6
010	43 _{HH}	45.01	42.47	40.04	39.98	11.58	10.03	1.3	6
012	48 _{HH}	50.50	47.96	45.53	45.47	11.58	10.03	1.3	6
013	51 _{HH}	53.01	50.47	48.04	47.88	11.71	10.16	1.3	6
014	53 _{HH}	55.52	52.98	50.55	50.50	11.71	10.16	1.3	6
015	58 _{HH}	59.51	56.97	54.54	54.48	11.71	10.16	1.3	6
016	60 _{HH}	62.48	59.94	57.51	57.43	11.71	10.16	1.3	6
017	63 _{HH}	65.51	62.97	60.54	60.45	11.71	10.16	1.3	6
018	66 _{HH}	68.50	65.96	63.53	63.47	11.71	10.16	1.3	6
019	70 _{HH}	72.49	69.95	67.52	67.49	11.71	10.16	1.3	6
020	83 _{HH}	86.74	83.69	80.59	80.52	14.53	12.65	1.5	5
021	89 _{HH}	92.91	89.87	86.77	86.61	15.75	13.87	1.5	5
022	100 _{HH}	103.73	100.69	97.59	97.48	16.84	14.94	1.5	5
023	110 _{HH}	113.64	110.59	107.49	107.34	16.84	14.94	1.5	5

DIMENSIONAL TOLERANCES	INTERNAL	EXTERNAL	ALL DIMENSIONS IN INCHES UNLESS OTHERWISE STATED TOLERANCES UNLESS OTHERWISE STATED: DIMENSIONS DIMENSIONAL DIMENSIONS UNLESS OTHERWISE STATED: 2 1/2, ANGULAR 1/2°	
DIMENSIONS UP TO 25.4 _{MM}	+ .15 - .20	+ .30 - .40	MATERIAL	TREATMENT
25.4 _{MM} TO 76.2 _{MM}	+ .20 - .25	+ .40 - .50	THERMOSETTING PLASTIC	
ABOVE 76.21 _{MM}	+ .25 - .35	+ .50 - .70	351CUPB	

TITLE				SCALE
STANDARD PLAIN R3 CLOSURES				
DRAWN	CHECKED	DATE	DRAWING NO°	
NPK		1/1/20	134	